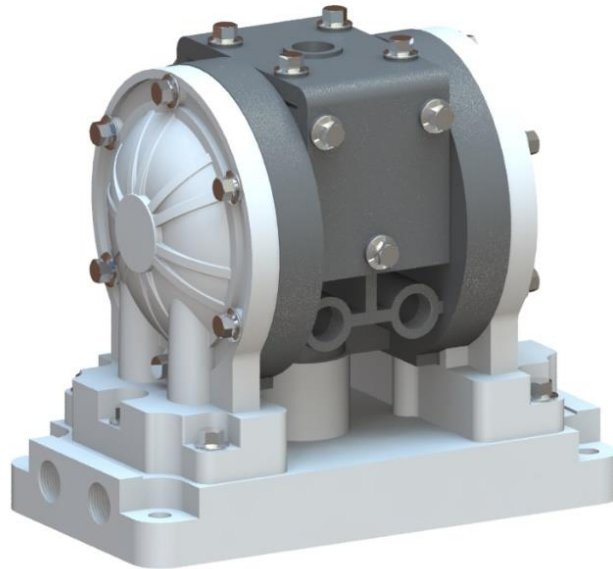


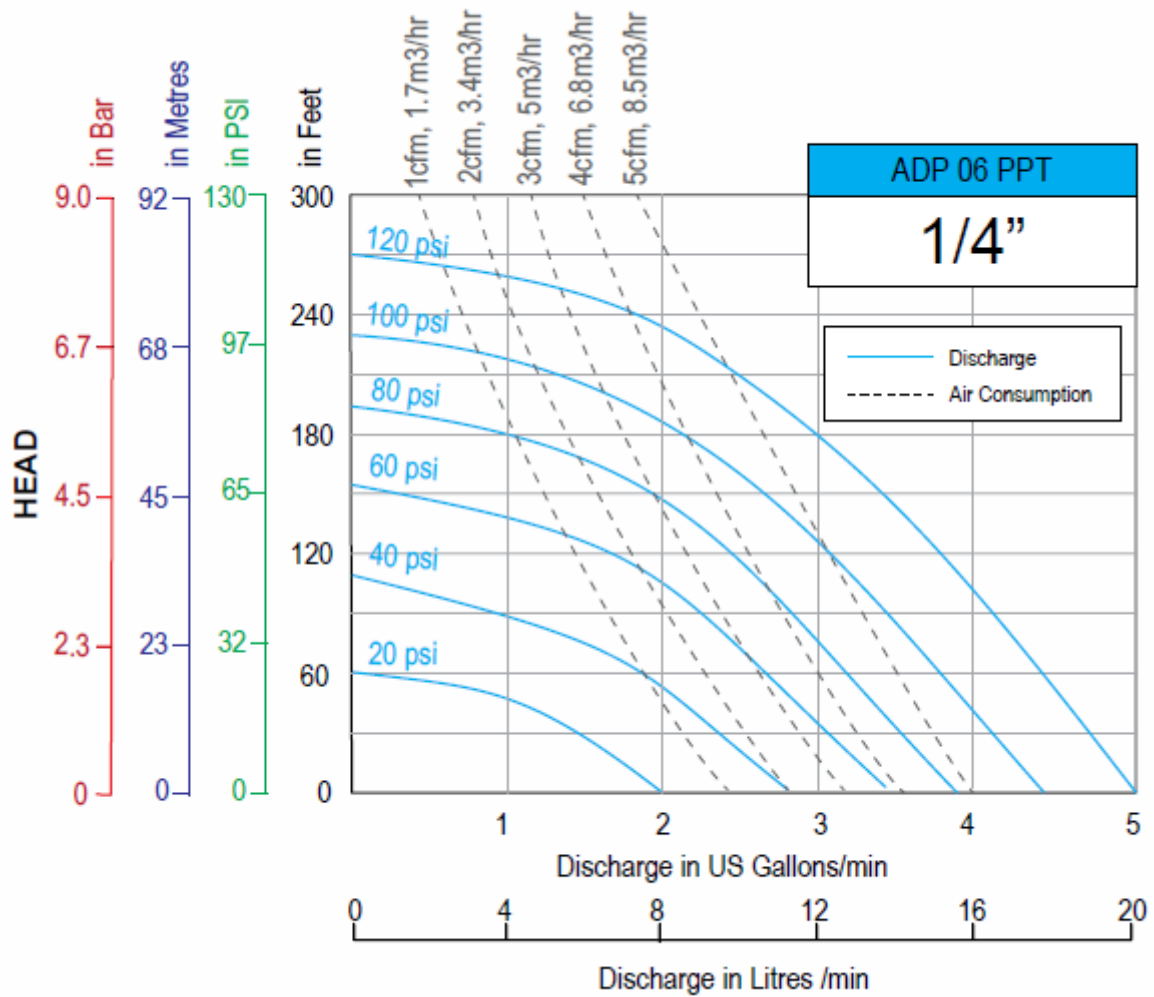
TETRA TDP-06 PP/T

Pneumatic diaphragm pump, polypropylene frame, teflon diaphragms, in/out 1/4"



Specs:	
Inlet size	1/4" NPT
Discharge size	1/4" NPT
Body material	Polypropylene
Diaphragm material	Teflon
Air inlet	1/4" NPT
Flow rate	1.08 m ³ /h
Suction lift	4 m
Head	0 - 84 m
Max. grain size	0.4 mm
Max. air consumption	141 L/min
Weight	1.4 KG

TDP-06 pump performance curve



Features of some kind of diaphragm materials:		
	Buna-N	Teflon
Nitric acid, fuming	X	G
Nitric acid, concentrated	X	G
Sulphuric acid, concentrated	X	G
Hydrochloric acid, concentrated	X	G
Phosphoric acid, concentrated	X	G
Acetic acid, concentrated	X	G
Sodium hydroxide, concentrated	L	G
Anhydrous ammonia	G	G
Nitric acid, dilute	X	G
Sulphuric acid, dilute	G	G
Hydrochloric acid, dilute	X	G
Phosphoric acid, dilute	X	G
Sodium hydroxide, dilute	L	G
Ammonia liquid	G	X
Benzene	X	L
Gasoline	L	L
Petroleum	G	L
Carbon tetrachloride	L	L
Carbon disulfide	L	L
Ethanol	L	L
Acetone	X	L
Cresol	X	L
Acetaldehyde	X	L
Ethyl benzene	X	L
Acrylonitrile	G	L
N-Butanol	L	L
Butadiene	L	L
Styrene	X	L
Ethyl acetate	X	L
Aether	X	X
L = Long service life		
G = General service life		
X = Not recommended		