



Washer extractor

QuickWash

Features and benefits

- Control knob for simple program selection and start
- Large, clear display
- **AS – Automatic Savings:**
 - The machine weighs the linen and adjusts the amount of water and energy according to the load. This leads to considerable savings in case the machine is not fully loaded
- Four compartment detergent box for manual dosing of powder or liquid detergent
- High extraction force for efficient dewatering
- Panels and frame made from galvanized steel
- Inner and outer drums made from stainless steel
- Powder coated black front panel, side panels and top cover
- Strong door and hinges. Easy-grip, ergonomic door handle which makes the door easy to open and close
- Drain pump
- Frequency-controlled motor with no carbon or brushes
- Door seal in the door, does not wear when the machine is loaded and unloaded



Images shown are a representation of the product only and variations may occur.

Main options

- Stacking kit to install tumble dryer QuickDry on top to save space
- Plinths for raising the machine to a comfortable height (height 100 mm when installed with a tumble dryer, or 290 mm)
- Connecting hoses

| Main specifications | | | QuickWash |
|---|-------|--|-----------------|
| Max. capacity | kg | | 5.5 |
| Drum, volume | litre | | 53 |
| diameter | ø mm | | 452 |
| Extraction | rpm | | 1300 |
| G-factor | | | 425 |
| Heating alternatives, electricity | kW | | 4.4 / 2.2 / 2.8 |
| Consumption data "Normal 60°C" * | | | |
| Total time | min | | 44 / 56 / 50 |
| Water consumption | litre | | 58 |
| Energy consumption (motor/heating) | kWh | | 0.15/0.80 |
| * Water temperature 15°C cold water. | | | |



Electrical connections

| Heating alternative | Main voltage | | Heating power kW | Total power kW | Recommended fuse A |
|---------------------|--------------|-------|------------------|----------------|--------------------|
| | | Hz | | | |
| Electric heated | 220-230V 1~ | 50/60 | 2.1 | 2.5 | 16 |
| | 220-230V 1~ | 50/60 | 4.2 | 4.7 | 25 |
| | 240V 1~ | 50/60 | 2.2 | 2.6 | 16 |
| | 380-400V 3 ~ | 50/60 | 4.2 | 4.7 | 10 |
| | 415V 3 ~ | 50/60 | 4.4 | 4.8 | 10 |

Water connections

| | | |
|---------------------|-------|---------|
| Water valves | DN | 20 |
| Water pressure | kPa | 200-500 |
| Capacity at 300 kPa | l/min | 17 |
| Draining capacity | l/min | 25 |
| Max. draining | l | 20 |

Floor requirements

| | | |
|--------------------------------|----|------------|
| Frequency of the dynamic force | Hz | 20 |
| Floor load at max extraction | kN | 1.02 ± 0.3 |

Sound levels

| | | |
|-----------------------------------|-------|----|
| Sound power level (IEC 60704-2-4) | | |
| wash | dB(A) | 59 |
| extraction | dB(A) | 72 |

Heat emission

| | | |
|---------------------------|--|---|
| % of installed power, max | | 5 |
|---------------------------|--|---|

Shipping data

| | | |
|-----------------|----------------|------|
| | net, kg | 99 |
| | crated, kg | 109 |
| Shipping volume | m ³ | 0.47 |

Accessories

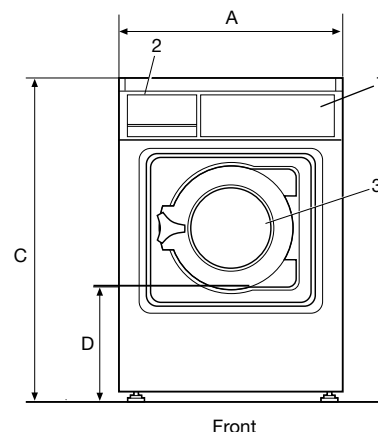
| | | |
|---|--|---|
| Stacking kit with QuickDry | | x |
| Stainless base, 290 mm, and galvanised base for stacking installation, 100 mm | | x |

Dimensions in mm

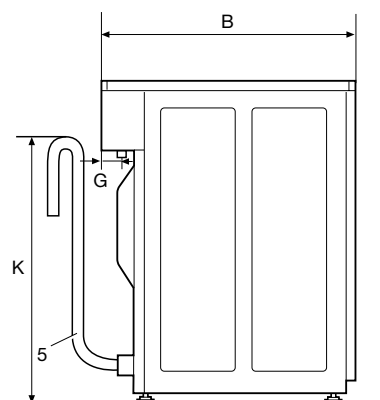
| | |
|----------|----------|
| A Width | 595 |
| B Depth | 680 |
| C Height | 850 |
| D | 305 |
| E | 660 |
| F | 80 |
| G | 60 |
| H | 90 |
| I | 80 |
| K | 650 ± 50 |

- 1 Control panel
- 2 Soap box
- 3 Door opening ø 255 mm
- 4 Cold water
- 5 Drain, pump
- 6 Electrical connection

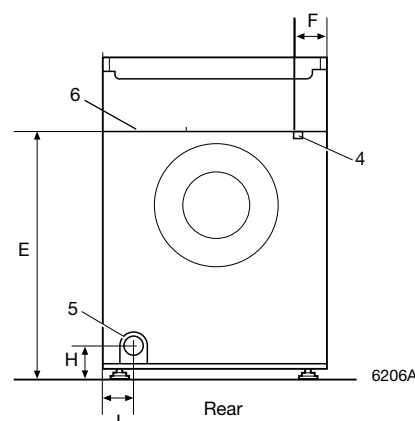
* Other voltages available, see installation manual



Front



Side view, pump



Rear

6206A