

TETRA Hydraulic Cylinder Multistage Type



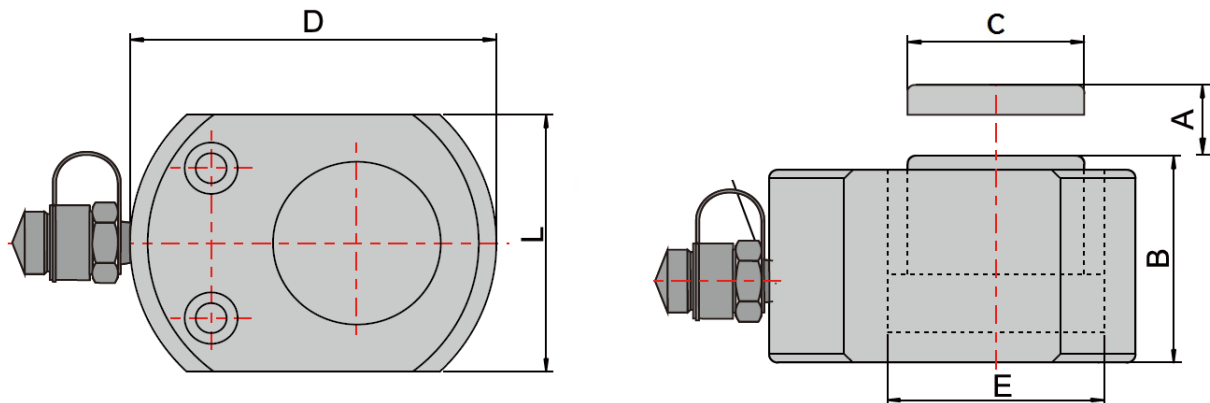
Tetra Hydraulic cylinder range features an assortment of high quality cylinders designed for a number of different applications. The range consists of;

- Regular cylinders (spring return)
- Hollow cylinder (spring return)
- Extra low height cylinders (spring return)
- Multistage cylinders (spring return)
- Double acting cylinders (hydraulic return)

Made of heavy-duty metal, our hydraulic cylinder is durable and designed for long-lasting use.
Paint sprayed to prevent scratching and corrosion.
Supplied with bag of spare seal rings.



Dimensions:



			A	B	C	D	L	E
Code	Product	Lifting cap (Ton)	Stroke (mm)	Closed Height (mm)	Piston diameter (mm)	Cylinder size (mm)	Cylinder size (mm)	Effective area (cm ²)
12362	TETRA THC-20M	20 Ton	28 mm	55 mm	48 / 30 mm	98 mm	80 mm	37,9 cm ²
12363	TETRA THC-50M	50 Ton	66 mm	71 mm	70 / 48 / 30 mm	147 mm	120 mm	97,5 cm ²
12352	TETRA THC-101L	10 Ton	11 mm	47 mm	38 mm	83 mm	65 mm	15,9 cm ²

Weight and other:

Code	Product	Oil cap (cc)	USE PUMP	IMPA	Nett Weight (kg)	Box weight	Box size (cm)
12362	TETRA THC-20M	51 cc	THHP-700 or THHP-700B		3,2 kg	3,5 kg	18 x 11 x 8
12363	TETRA THC-50M	188 cc	THHP-700 or THHP-700B	615142	8,2 kg	8,5 kg	23 x 17 x 6



High flow 3/8" NPT Connection

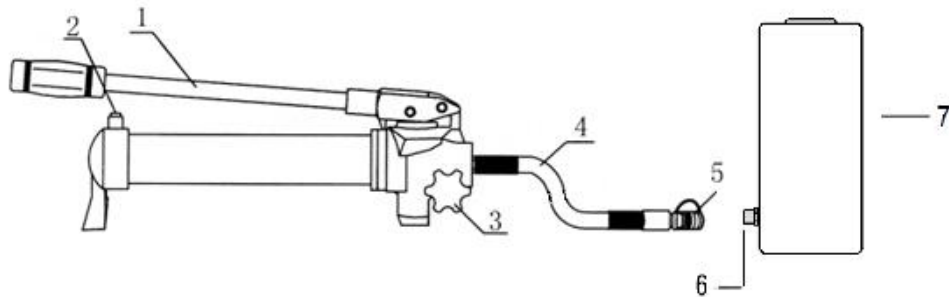


Pump hose end



Cylinder side

Basic spring return hydraulic cylinder set-up



- 1) Handlever
- 2) Oil reservoir plug
- 3) Return valve
- 4) Hose 1,5 meter (male thread in pump, other side female thread)
- 5) Female Hydraulic coupler
- 6) Male Hydraulic coupler
- 7) Hydraulic cylinders

