

## **TETRA Hydraulic Cylinder Low Height Type**



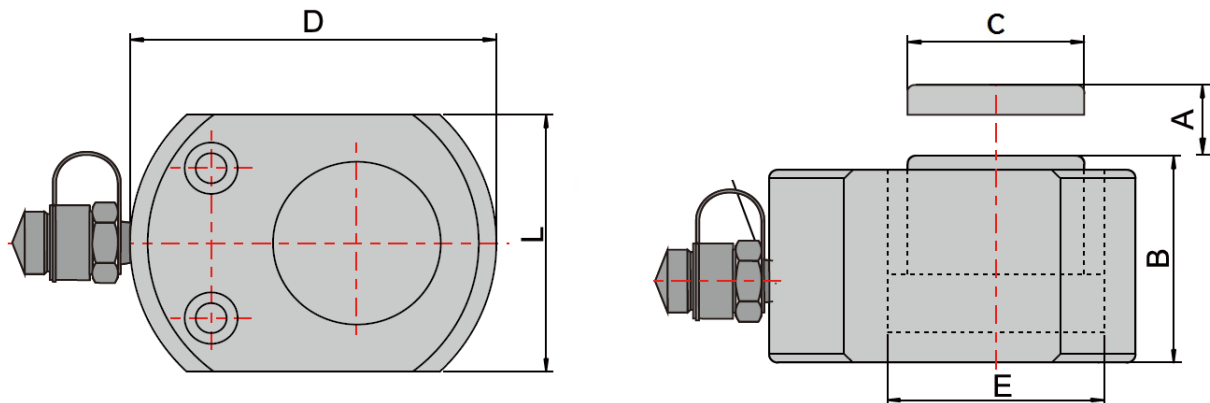
Tetra Hydraulic cylinder range features an assortment of high quality cylinders designed for a number of different applications. The range consists of;

- **Regular cylinders (spring return)**
- **Hollow cylinder (spring return)**
- **Extra low height cylinders (spring return)**
- **Multistage cylinders (spring return)**
- **Double acting cylinders (hydraulic return)**

Made of heavy-duty metal, our hydraulic cylinder is durable and designed for long-lasting use.  
Paint sprayed to prevent scratching and corrosion.  
Supplied with bag of spare seal rings.



## Dimensions:



			A	B	C	D	L	E
Code	Product	Lifting cap (Ton)	Stroke (mm)	Closed Height (mm)	Piston diameter (mm)	Cylinder size (mm)	Cylinder size (mm)	Effective area (cm <sup>2</sup> )
12352	TETRA THC-101L	10 Ton	11 mm	47 mm	38 mm	83 mm	65 mm	15,9 cm <sup>2</sup>
12353	TETRA THC-301L	30 Ton	14 mm	61 mm	65 mm	120 mm	100 mm	44,1 cm <sup>2</sup>
12354	TETRA THC-501L	50 Ton	18 mm	71 mm	70 mm	140 mm	117 mm	70,8 cm <sup>2</sup>

## Weight and other:

Code	Product	Oil cap (cc)	USE PUMP	IMPA	Nett Weight (kg)	Box weight	Box size (cm)
12352	TETRA THC-101L	17 cc	THHP-700C		1,6 kg	2 kg	16 x 9 x 8
12353	TETRA THC-301L	62 cc	THHP-700 or THHP-700B		5,1 kg	5,5 kg	20 x 13 x 8
12354	TETRA THC-501L	127 cc	THHP-700 or THHP-700B	615141	7,7 kg	8 kg	23 x 14 x 8



## High flow 3/8" NPT Connection

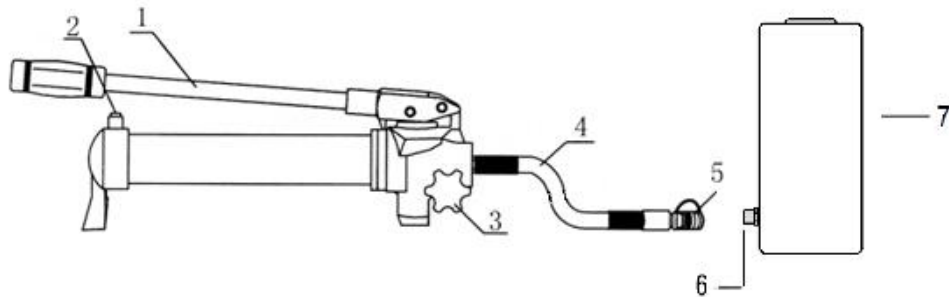


Pump hose end



Cylinder side

## Basic spring return hydraulic cylinder set-up



- 1) Handlever
- 2) Oil reservoir plug
- 3) Return valve
- 4) Hose 1,5 meter (male thread in pump, other side female thread)
- 5) Female Hydraulic coupler
- 6) Male Hydraulic coupler
- 7) Hydraulic cylinders

